

Design, Development, Installation, & Testing of Cow Grooming brush

Amarjeet Mohture, Sandesh Bansod , Ajay Mahawadiwar*

B.Tech, Department of Mechanical Engineering, G.H Rasoni University, Saikheda M.P.

**Asstt. Professor, Department of Mechanical Engineering, G.H Rasoni University, Saikheda M.P.*

Abstract - The Swinging Cow Grooming Brush is a distinctive and enjoyable tool crafted to simplify grooming for both pets and their owners. Its unique swinging motion, inspired by the natural movement of a cow's tail, allows the brush to glide gently through the fur, effectively cleaning and detangling without causing any discomfort. What sets the Swinging Cow Grooming Brush apart from traditional grooming tools is its playful and eye-catching design. The swinging action transforms grooming into a soothing ritual rather than a mundane task. It is thoughtfully designed to access all areas of the animal's fur, loosening dirt and tangles while remaining gentle on the skin. The brush features an abstract and whimsical design, often showcasing curved lines and soft shapes that deviate from the conventional appearance of grooming tools. It serves not only as a grooming instrument but also as a piece of art, elevating an everyday task into something visually appealing. The Swinging Cow Grooming Brush beautifully merges aesthetics with functionality, providing a creative approach to animal care this grooming tool is ideal for those looking to infuse a sense of fun into the grooming process while maintaining practicality. Its unique blend of movement, design, and purpose offers a truly exceptional experience, transforming grooming into a more enjoyable and artistic endeavor.

Key Words: Grooming Cow brush, Swinging motion, Animal care, Abstract design, Animal comfort

1. INTRODUCTION

The Swinging Cow Grooming Brush is a delightful and innovative tool crafted to simplify the grooming process for your animals while making it a more enjoyable experience. Drawing inspiration from the natural swinging motion of a cow's tail, this brush incorporates a gentle, rhythmic movement that effectively loosens dirt and tangles in the fur without causing any discomfort to the animal.

What sets this brush apart is its unique design, which not only enhances the effectiveness of grooming but also transforms it into a soothing and almost playful

activity for both the animal and the owner. Whether you're tending to a cow, horse, or other types of livestock, the Swinging Cow Grooming Brush merges practicality with creative design, providing a refreshing approach to animal care.

1.1 OBJECTIVES

Enhance Grooming Efficiency: Utilizes a swinging motion that effectively eliminates dirt and tangles from the fur.

Prioritize Comfort: Softly brushes the animal's coat, ensuring a gentle experience that mimics a natural, soothing motion.

Transform Grooming into Enjoyment: Makes the grooming process a fun and calming experience for both pets and their owners.

Encourage Consistent Use: Inspires pet owners to groom more frequently by turning it into an engaging and enjoyable activity.

Merge Functionality with Aesthetics: Integrates practical grooming features with an attractive, abstract design that catches the eye.

Adaptable for Various Animals: Designed to be effective for a range of animals, including cows, horses, and other livestock.

Built for Durability: Constructed to endure regular use, ensuring reliability over the long term.

Foster Innovation: Provides a fresh and creative approach to traditional grooming tools.

1.2 LITERATURE STUDY

A literature study on the Swinging Cow Grooming Brush delves into the evolution of grooming tools for animals, emphasizing both functionality and design. Historically, traditional grooming tools have focused on efficiency and comfort, but recent innovations are introducing more creative and interactive elements to enhance the grooming experience.

The Swinging Cow Grooming Brush exemplifies this trend by featuring a swinging motion that mimics the natural movements of animals, particularly cows. This

gentle motion effectively loosens dirt and tangles, making the grooming process more comfortable for the animal. Research in animal behavior indicates that rhythmic motions can have calming effects on livestock, thereby contributing to a positive grooming routine.

Additionally, the integration of art and function in grooming tools is gaining traction. Numerous studies suggest that visually appealing tools can enhance the user experience, making grooming tasks more enjoyable and encouraging regular use. The Swinging Cow Grooming Brush embraces this concept with its unique, abstract design that not only challenges traditional grooming aesthetics but also offers practical benefits.

Furthermore, the tool's adaptability for various animals, including cows, horses, and other livestock, underscores a growing trend toward multipurpose grooming devices. Literature on animal care highlights the significance of using tools that can accommodate different species, ensuring a more efficient and stress-free grooming process for both the animal and the caretaker.

IV. METHODOLOGY

Literature Review and Conceptualization: The project begins with a thorough examination of existing grooming tools and methods utilized in animal care. This involves analyzing animal grooming behaviors, particularly how natural actions, like a cow's tail swishing, can be integrated into a grooming tool. The literature review also investigates user needs and preferences, ensuring that the design prioritizes comfort, efficiency, and ease of use.

Design and Prototyping: Drawing from the insights obtained during the literature review, the initial design of the Swinging Cow Grooming Brush is developed. This stage includes creating concept sketches and 3D models that incorporate the swinging motion mechanism. Designers aim to craft a brush that delivers a gentle, rhythmic movement while effectively removing dirt and tangles. A prototype is constructed using selected materials that are durable, lightweight, and safe for the animals, with bristles tested for softness to guarantee animal comfort.

Material Selection and Testing: The selection of materials is approached with a focus on both

functionality and safety. The bristles are crafted from either synthetic or natural fibers that are gentle yet effective, while the brush's body is made from a robust, lightweight material that facilitates the swinging motion. During this phase, various materials are subjected to tests for durability, flexibility, and ease of cleaning, ensuring compliance with industry standards for animal care tools.

Prototype Evaluation: The prototype undergoes multiple rounds of testing to assess its performance. These evaluations focus on the effectiveness of the swinging action in loosening dirt and detangling fur. Additionally, the comfort and safety of the brush are closely monitored by observing the animals' reactions during the grooming process. Feedback is collected from a select group of animal caretakers, including farmers and groomers, who use the prototype on various animals such as cows, horses, and goats. The objective is to confirm that the brush performs well across different fur types and that the swinging motion is both safe and efficient.

User Feedback and Refinement: After the prototype testing, feedback is solicited from animal caretakers regarding the brush's usability, design, and comfort. This information is crucial for identifying any design flaws or areas needing improvement. Adjustments are made to the brush's swinging mechanism, handle ergonomics, and overall appearance based on the feedback received.

Final Product Development: Once the design and functionality have been refined, preparations for mass production of the final product commence. Detailed manufacturing specifications are established to ensure consistency and quality. The product is manufactured using high-quality, durable materials and is tested for scalability in the mass market.

Post-Launch Monitoring and Evaluation: Following the product's market release, ongoing monitoring is conducted to assess its long-term performance. Customer reviews and feedback are collected to pinpoint any areas that may need further enhancement or adjustments in future iterations of the product.

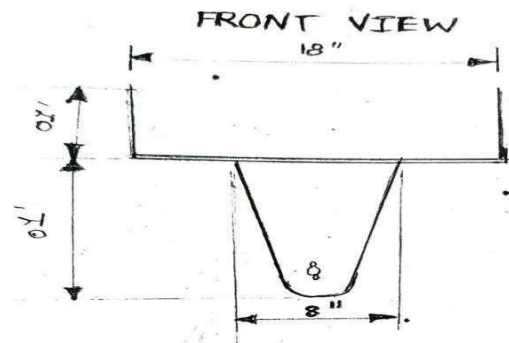
Sr. No.	Item description	specification	Quantity
1	Grooming brush plastic	Height 2' Out Side Dia. 18'	1 no.
2	Electric Motor (1HP)	speed 1440 rpm watt 240, 50Hz weight 14 kg	1no.
3	Mild steel plate	2'*2'	6 no.
4	HT bolt with nut (half thread)	03"*12mm & 1.5"x 10mm	4no. 4no
5	Locking washer	1"	8 no.
6	Arm square pipe (mild steel)	20' length *4"*4"*5mm thik.	2 no.
7	Solid shaft (mild steel)	Dia1.5"x3' length	1 no.
8	HT bolt with nut washer	16mm dia.x1.5' length	2 no.
9	Coupling (mild steel)	One side dia. 20mm Secondsidedia.38.1mm	1 no.
10	Speed controller	1 hp motor purpose	1 no.

V. DESIGNING OF THE MODEL

The designing of the model was done in both 2D

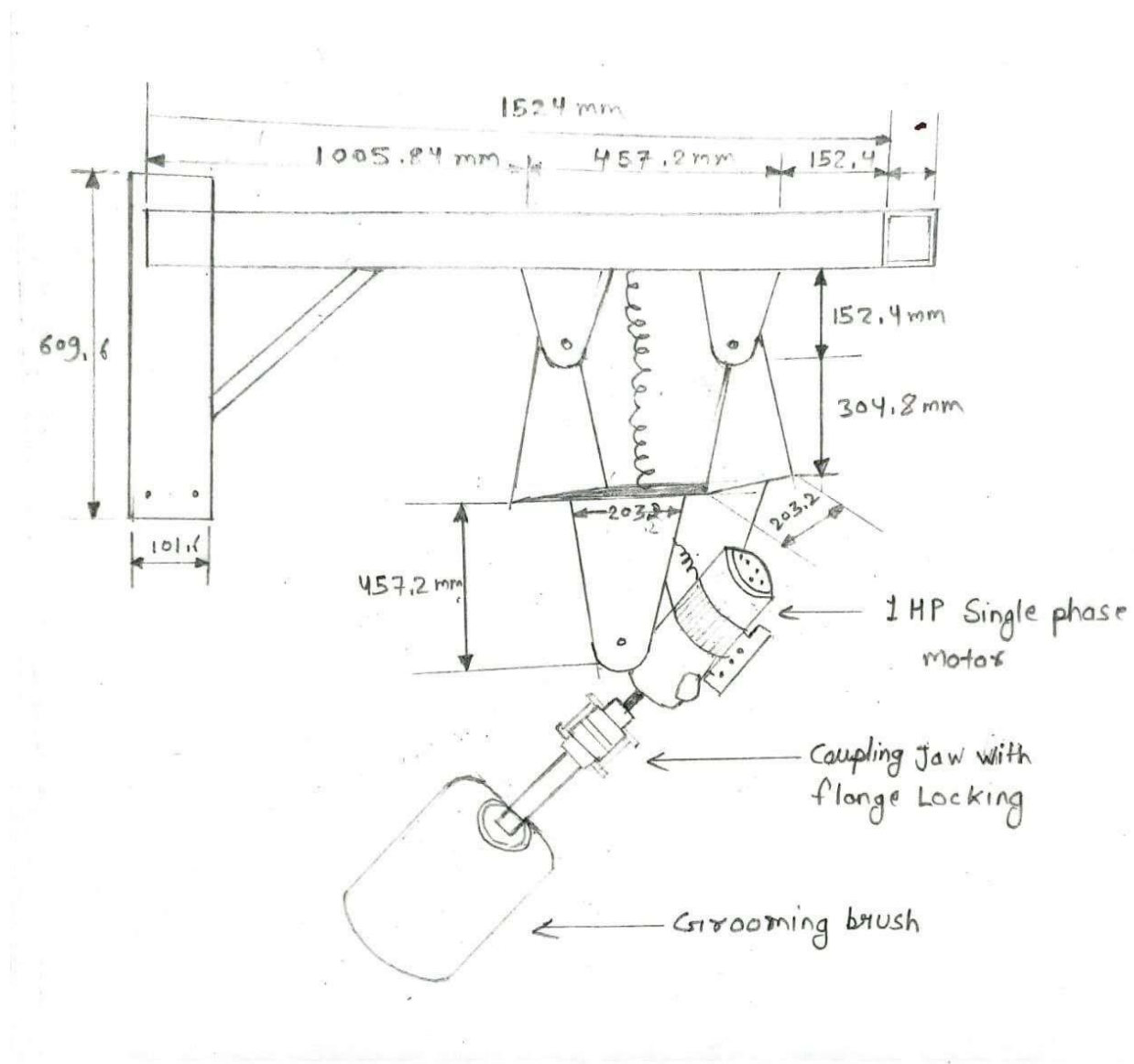
First the 2D model diagrams were made to understand the basic principles needed to be implemented while fabricating the machine.

Front view in frame body in swinging motion in show.



The cow brush conforms to the scientific design of the cow's body structure and behavioral habits. It uses high-wear-resistant material gaskets

It has swinging part such as motion system in mechanism in the rotated in motor and shaft coupling in Joint in a flange system in locked



Swinging cow grooming brush

Fabrication of the model

During the fabrication stage of the project model, various processes such as sheet cutting, welding, lathe working assembly of parts and study of the materials to be used was done during its course.

Material identification and collection is the first step taken while fabricating the model.

Materials such as mild steel sheet, square arm are chosen to build the outer body structure of the machine.

Sheet & Square Pipe cutting operation:

The type of sheet used in swinging motion the outer body is mild steel sheet. And square arm pipe in structure are outer body in lord afford.

Firstly cutting the beat as per drawing length 1.5* 4"*below and upper in cutting in a plates in 4 noes and drawing according



Lathe Working :

In lathe machine we do key way cutting by moving the shaft.

And in this case of coupling no110, a hole of 20mm is made from one side with key way and in the dia. Of the other side a hole of 38.1mm with key way is made as they make it.

And to locking the coupling a flange is made, around which a 12mm drill hole in made.



Welding work :

We weld the plates mentioned in the square arm pipe and from the structure by joining all the others plates joint in welding.



Operations:

First of all we connect the square arm pipe in welded in a plate .and welded plate in center in connected in 1 hp single phase motor in HT bolt and brush in connect in help of coupling in shaft and flange in a lock.

And rotted in a motor and then grooming bush in a rotted.

3. CONCLUSIONS

In summary, a swinging cow grooming brush represents a groundbreaking tool aimed at enhancing the health and comfort of livestock, especially dairy cows. This innovative brush offers a more effective and comprehensive cleaning experience, efficiently removing dirt, debris, and loose hair. As a result, it promotes better hygiene and minimizes the risk of skin infections.

The unique swinging motion of the brush allows cows to groom themselves in a natural and relaxed way, which can significantly boost their overall well-being

and help alleviate stress. Furthermore, by enhancing the comfort of the cows, this grooming tool can lead to increased milk production and improved productivity within the herd.

ACKNOWLEDGEMENT

We would like to express our heartfelt gratitude to everyone who played a role in the development and success of the swinging cow grooming brush. A special acknowledgment goes to the engineers, designers, and livestock experts whose knowledge and dedication have brought this innovative solution to life. Their unwavering commitment to enhancing animal welfare and advancing farming practices has been truly invaluable.

Furthermore, we extend our appreciation to the farmers and dairy producers who have shared their feedback and support throughout this journey. Their insights have been crucial in helping us refine and improve the product. This collaborative effort has led to the creation of a tool that not only benefits livestock but also enhances agricultural operations, ultimately resulting in healthier animals and more efficient farming practices.

REFERENCES

- 1) Ewing, S. A., Lay, D. C., and Von Borell, E. 1999. *Farm Animal Well Being*. Upper Saddle River, NJ: Prentice Hall.
- 2) DeVries, J. J., Vankova, M., Veira, D. M., and von Keyserlingk, M. A. G. 2007. "Short Communication: of Mechanical Brushes by Lactating Dairy Cows." *T. Dairy Sci.* 90: 2241-5. doi:10.3168/jds.2006-648.
- 3) Georg, H., and Totschek, K. 2001. "Examining an Automatic Cow brush for Dairy Cows." *Landtechnik* 56: 260-1. K. Elissa, "Title of paper if known," unpublished.
- 4) Yousef, R. T., and Tawil, G. G. 1980. "Antimicrobial of Volatile Oils." *Pharmazia* 35: 698-701.
- 5) Fraser, A. F., and Broom, D. M. 1990. *Farm Animal Behaviour and Welfare*. London: Baillière Tindall.

BIOGRAPHIES



NAME: AJAY MAHAWADIWAR
Asst. Prof. Department of
Mechanical engineering
GH Raisoni University, Saikheda



NAME: AMARJEET MOHTURE
B.Tech Mechanical Engineering
Is a student GH Raisoni
University, Saikheda



NAME: SANDESH BANSOD
Diploma Mechanical
Engineering Is a student
GH Raisoni University, Saikheda