

Effectiveness of India's Land Acquisition Reforms: A Study of Resettlement and Rehabilitation Outcomes under the Right to Fair Compensation and Transparency in Land Acquisition, Rehabilitation and Resettlement Act, 2013

Ar. Mahima Chawla¹, Pl. Arundhatee Mishra²

¹Master of Urban and Regional Planning Faculty of Architecture and Planning, Dr. A.P.J Abdul Kalam Technical University Lucknow, India

²Assistant Professor Faculty of Architecture and Planning, Dr. A.P.J Abdul Kalam Technical University Lucknow, India

Abstract - *The Right to Fair Compensation and Transparency in Land Acquisition, Rehabilitation and Resettlement Act, 2013 (LARR Act, 2013) represents a significant shift in India's approach to land acquisition by integrating compensation with resettlement and rehabilitation (R&R) measures. This paper examines the concept of resettlement and rehabilitation and evaluates the effectiveness of the Act in addressing the socio-economic impacts of displacement caused by development projects. The study highlights how the Act introduces key provisions such as Social Impact Assessment (SIA), enhanced compensation, consent requirements, and structured R&R entitlements to ensure a more participatory and equitable process.*

Using a case-based approach, the paper analyzes the implementation of the Act in the context of large-scale infrastructure development, focusing on its ability to restore livelihoods, ensure social inclusion, and improve living conditions of affected populations. The findings indicate that while the Act has strengthened the legal and institutional framework for fair compensation and rehabilitation, challenges remain in its implementation, particularly in livelihood restoration, administrative efficiency, and ground-level execution.

The paper concludes that although the LARR Act, 2013 marks a progressive step towards inclusive and transparent land acquisition, its success depends on effective implementation and a stronger focus on long-term rehabilitation rather than compensation alone.

Key Words: Resettlement and Rehabilitation (R&R), Land Acquisition, LARR Act, 2013, Social Impact Assessment, Livelihood Restoration, Displacement, Inclusive Development

1. INTRODUCTION

Land acquisition has long been a central component of development planning in India, facilitating the implementation of infrastructure projects, industrial growth,

urban expansion, and public utilities. Historically, the process was governed by the Land Acquisition Act of 1894, a colonial-era legislation that primarily emphasized state authority over land, often overlooking the rights and welfare of affected communities. This resulted in widespread displacement, inadequate compensation, and the absence of structured mechanisms to support affected populations, leading to social conflicts and resistance across various regions of the country.

The increasing scale of development projects intensified the need to address the adverse impacts of displacement, particularly among vulnerable groups such as farmers, landless laborers, and tribal communities. In this context, the concept of Resettlement and Rehabilitation (R&R) gained importance. Resettlement refers to the physical relocation of affected persons from their original place of residence, while rehabilitation focuses on restoring their livelihoods, income levels, and overall quality of life. Effective R&R is essential to ensure that development-induced displacement does not lead to long-term impoverishment, social disintegration, and economic marginalization. From a planning perspective, it plays a crucial role in promoting inclusive and equitable development.

Recognizing these challenges, the Government of India enacted the Right to Fair Compensation and Transparency in Land Acquisition, Rehabilitation and Resettlement Act, 2013 (LARR Act, 2013), replacing the outdated 1894 law. The Act represents a significant shift in the approach to land acquisition by integrating fair compensation with mandatory resettlement and rehabilitation provisions. It introduces key measures such as Social Impact Assessment (SIA), enhanced compensation frameworks, consent requirements for certain categories of projects, and institutional mechanisms to ensure transparency and accountability. By doing so, the Act seeks to balance the needs of development with the protection of affected communities.

The aim of this study is to examine the framework of resettlement and rehabilitation under the LARR Act, 2013 and to evaluate its effectiveness in addressing the socio-

economic challenges associated with land acquisition. The study focuses on understanding how far the Act ensures fair compensation, facilitates livelihood restoration, and promotes inclusive development, while also identifying the gaps between policy provisions and their implementation on the ground.

and healthcare, and ensure social inclusion, particularly for vulnerable groups.

From a planning perspective, R&R is essential for achieving **inclusive and sustainable development**. It helps in minimizing the adverse impacts of displacement, reducing social conflicts, and ensuring equitable distribution of development benefits. Effective R&R integrates social justice into the planning process by balancing infrastructure growth with the protection of affected communities. Without proper rehabilitation, resettlement alone can lead to impoverishment, marginalization, and long-term socio-economic distress.

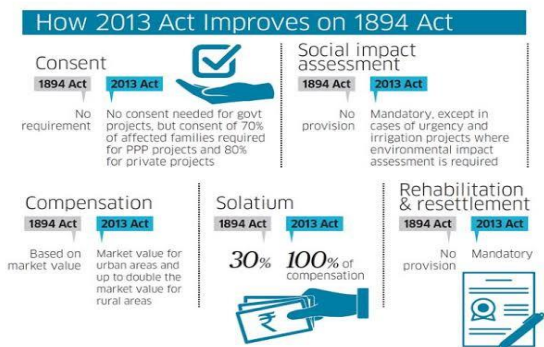


Fig -1: Comparison between the Land Acquisition Act, 1894 and the LARR Act, 2013

Table -1: Need for Resettlement and Rehabilitation in Development Projects

2. CONCEPTUAL FRAMEWORK OF RESETTLEMENT AND REHABILITATION

Resettlement and Rehabilitation (R&R) form a critical framework in development planning, particularly in projects that involve land acquisition and displacement. The concept recognizes that development-induced displacement affects not only the physical location of people but also their economic stability, social networks, and overall quality of life. Therefore, R&R aims to ensure that affected populations are not worse off after displacement and are able to restore, or ideally improve, their living conditions. **Resettlement** refers to the **physical relocation** of displaced persons from their original place of residence to a new location. This includes the provision of housing, land, or shelter in a planned and organized manner. It focuses primarily on the spatial aspect of displacement. **Rehabilitation**, on the other hand, refers to the **restoration of livelihoods, income sources, and social well-being** of affected people. It goes beyond physical relocation and addresses long-term socio-economic sustainability, including employment opportunities, access to services, and community integration.

The framework of R&R is typically understood through three key components:

- **Physical Component:** Involves provision of housing, land, and basic infrastructure such as water supply, sanitation, electricity, and roads to ensure safe and adequate living conditions in the resettlement area.
- **Economic Component:** Focuses on restoring income and livelihood opportunities through compensation, employment, skill development, and financial assistance to ensure economic stability.
- **Social Component:** Aims to maintain and rebuild community networks, provide access to education

Issue Due to Displacement	Impact on Affected Population	Need for R&R Intervention	Planning Relevance
Loss of Housing	Homelessness, unsafe living conditions	Provision of permanent housing	Ensures basic human shelter
Loss of Livelihood	Unemployment, income reduction	Livelihood restoration, job support	Promotes economic stability
Land Acquisition	Loss of agricultural land	Land compensation / land-for-land	Protects rural economy
Social Disintegration	Breakdown of communities and networks	Community-based resettlement	Maintains social cohesion
Lack of Basic Services	Poor access to water, sanitation, electricity	Infrastructure development in resettlement areas	Improves quality of life
Vulnerability of Groups	SC/ST, women, elderly more affected	Targeted support and inclusion	Ensures social equity
Psychological Stress	Anxiety, insecurity, loss of identity	Social support and integration measures	Supports human well-being
Urban Marginalization	Shift to peripheral areas, exclusion	In-situ or well-connected resettlement	Promotes inclusive planning

3. EVOLUTION OF LAND ACQUISITION POLICIES IN INDIA

The evolution of land acquisition policies in India reflects a clear transition from a **state-dominated, acquisition-driven approach** to a more **people-centric and participatory framework**. The colonial **Land Acquisition Act of 1894** primarily focused on facilitating land acquisition for public purposes, with limited consideration for the rights, livelihoods, and welfare of affected populations. Over time, this led to widespread dissatisfaction due to issues such as inadequate compensation, lack of transparency, and absence of resettlement and rehabilitation provisions.

With increasing development pressures and rising social conflicts, the need for reform became evident. This led to the enactment of the **Right to Fair Compensation and Transparency in Land Acquisition, Rehabilitation and Resettlement Act, 2013**, which marked a significant shift in policy. The Act introduced key elements such as Social Impact Assessment, enhanced compensation, consent requirements, and mandatory resettlement and rehabilitation measures, thereby integrating social justice into the land acquisition process.

In conclusion, the evolution of land acquisition laws in India signifies a **paradigm shift towards inclusive and equitable development**, where the focus is not only on acquiring land for growth but also on safeguarding the rights and livelihoods of affected communities. However, the effectiveness of this transformation ultimately depends on the proper implementation of these provisions on the ground.

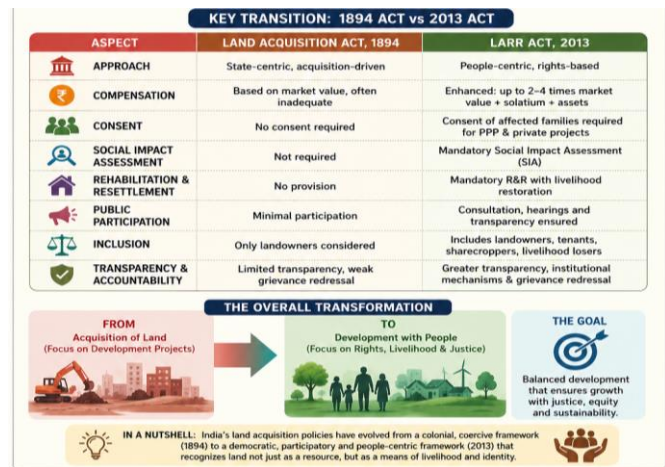


Fig -2: Evolution of land acquisition laws in India

4. FRAMEWORK OF THE LARR ACT, 2013

The LARR Act, 2013 establishes a **comprehensive, multi-stage framework** for land acquisition that integrates **fair compensation, transparency, public participation, and mandatory resettlement and rehabilitation (R&R)**. The process begins with the identification of land for a public purpose, followed by the issuance of a preliminary notification. A **Social Impact Assessment (SIA)** is then conducted to evaluate the potential social, economic, and environmental impacts, along with public consultations to ensure stakeholder involvement. For certain projects, the Act mandates obtaining **consent from affected families**, reinforcing a participatory approach.

Subsequently, compensation is determined based on market value with additional benefits such as solatium and multipliers, ensuring fairness, especially in rural areas. A detailed **R&R plan** is prepared, focusing on housing, livelihood restoration, infrastructure, and support for vulnerable groups. This is followed by the implementation stage, where compensation is disbursed and rehabilitation measures are executed. Finally, the framework includes **monitoring and grievance redressal mechanisms** to ensure accountability and transparency.

Overall, the Act transforms land acquisition from a purely administrative process into a **people-centric and development-oriented framework**, emphasizing not only the acquisition of land but also the protection of livelihoods and social well-being of affected populations.



Table -2: Framework of LARR Act, 2013

Stage	Process	Key Features	Planning Significance
1	Notification	Declaration of public purpose	Initiates legal process
2	SIA	Impact assessment + consultation	Evidence-based planning
3	Consent	Approval from affected families	Participatory approach
4	Compensation	Fair monetary compensation	Economic justice
5	R&R Plan	Housing + livelihood measures	Social sustainability
6	Implementation	Execution of provisions	Ground reality impact
7	Monitoring	Grievance redressal system	Accountability

5. CASE STUDY ANALYSIS

Sardar Sarovar Dam (Narmada Valley Project, India)

The Sardar Sarovar Dam is one of the most significant and widely studied examples of development-induced displacement in India, making it highly relevant for analyzing the framework of the Right to Fair Compensation and Transparency in Land Acquisition, Rehabilitation and Resettlement Act, 2013. The project led to large-scale displacement of rural and tribal populations, exposing major shortcomings in earlier land acquisition practices, such as inadequate compensation, lack of structured resettlement, and absence of livelihood restoration. These challenges highlighted the urgent need for a comprehensive and people-centric legal framework. The LARR Act, 2013 addresses these issues by introducing provisions such as Social Impact Assessment (SIA), fair compensation, mandatory resettlement and rehabilitation (R&R), and participatory decision-making. However, while the Act provides a robust framework, gaps still remain in its implementation, particularly in ensuring long-term livelihood sustainability and effective execution on the ground. Thus, the Sardar Sarovar Dam case serves as a critical example that not only demonstrates the failures of past policies but also underscores the relevance and necessity of the LARR Act in achieving equitable and inclusive development.

FRAMEWORK OF THE LARR ACT, 2013

Right to Fair Compensation and Transparency in Land Acquisition, Rehabilitation and Resettlement Act, 2013



Fig -3: Framework of the LARR Act 2013

Table -3: Case Study Linkage with LARR Act Framework

Aspect	Case Reality (Sardar Sarovar Dam)	LARR Act Provision	How It Works	Gaps Identified	Improvement Due to Act
Land Acquisition	Large-scale displacement of villages	Legal framework for acquisition	Structured process with defined stages	Earlier arbitrary acquisition	Transparent and regulated acquisition
Compensation	Often inadequate and unequal	Enhanced compensation (up to 4x)	Based on market value + solatium	Disputes in valuation	Fair and improved compensation
Resettlement	Poorly planned	Mandatory R&R	Housing + infras	Poor quality of	Better planned

	relocation sites	provisions	structures provided	facilities	resettlement
Rehabilitation	Weak livelihood restoration	Livelihood support measures	Skill development, financial aid	Long-term sustainability issues	Focus on livelihood restoration
Social Impact	Tribal and vulnerable groups heavily affected	Social Impact Assessment (SIA)	Identifies affected groups and impacts	Implementation delays	Better impact assessment
Public Participation	Limited involvement of affected people	Consent clause + consultation	Public hearings and approvals	Partial participation in practice	Increased inclusiveness
Implementation	Delays and administrative inefficiency	Institutional mechanisms	Monitoring committees	Weak execution	Improved governance framework

India, with a particular focus on the Right to Fair Compensation and Transparency in Land Acquisition, Rehabilitation and Resettlement Act, 2013. The analysis highlighted that earlier land acquisition practices, especially under the 1894 Act, were largely state-centric and failed to adequately address the socio-economic consequences of displacement. The absence of fair compensation, lack of livelihood restoration, and minimal public participation often resulted in social conflicts and long-term marginalization of affected communities.

The introduction of the LARR Act, 2013 marked a significant shift towards a more inclusive and transparent framework by integrating fair compensation with mandatory R&R provisions. Key features such as Social Impact Assessment (SIA), consent requirements, enhanced compensation, and institutional mechanisms have strengthened the legal and planning framework for equitable land acquisition. From a planning perspective, the Act represents an important step toward balancing development objectives with social justice and human well-being.

The case study of the Sardar Sarovar Dam demonstrated the critical gaps in earlier R&R practices, particularly in terms of livelihood restoration and social integration. It underscored that compensation and physical resettlement alone are insufficient to ensure sustainable rehabilitation. While the provisions of the LARR Act directly address many of these shortcomings, the study also reveals that challenges persist in implementation, including delays, administrative inefficiencies, and gaps in long-term livelihood support. In conclusion, the LARR Act, 2013 provides a robust and progressive framework for land acquisition and R&R in India. However, its success depends on effective execution, continuous monitoring, and a stronger emphasis on sustainable rehabilitation. For truly inclusive development, future efforts must focus not only on compensating for loss of land but also on restoring livelihoods, strengthening community resilience, and ensuring that affected populations become active beneficiaries of development rather than its victims.

REFERENCES

[1] Government of India. (2013). The Right to Fair Compensation and Transparency in Land Acquisition, Rehabilitation and Resettlement Act, 2013. Ministry of Law and Justice.

[2] Cernea, M. M. (2000). Risks, safeguards and reconstruction: A model for population displacement and resettlement. World Bank.

[3] Mathur, H. M. (2013). Displacement and resettlement in India: The human cost of development. Routledge.



Fig -4: Location Map of Sardar Sarovar Dam and Narmada Canal System in Gujarat, India

6. CONCLUSIONS

This study examined the framework of resettlement and rehabilitation (R&R) in the context of land acquisition in

- [4] Terminski, B. (2013). Development-induced displacement and resettlement: Causes, consequences, and socio-legal context. Columbia University.
- [5] World Bank. (2004). Involuntary resettlement sourcebook: Planning and implementation in development projects. World Bank Publications.
- [6] Government of India. (2007). National Rehabilitation and Resettlement Policy, 2007. Ministry of Rural Development.
- [7] Parasuraman, S. (1999). The development dilemma: Displacement in India. Macmillan.
- [8] Fernandes, W. (2007). Singur and the displacement scenario. *Economic and Political Weekly*, 42(3), 203–206.
- [9] Centre for Science and Environment. (2015). Land acquisition and rehabilitation in India: Issues and challenges. New Delhi.

REFERENCES

Case Study (Sardar Sarovar Dam)

- [1] Morse, B., & Berger, T. (1992). *Sardar Sarovar: Report of the independent review*. World Bank.
- [2] Dwivedi, R. (2002). Models and methods in development-induced displacement. *Development and Change*, 33(4), 709–732.
- [3] Baviskar, A. (2004). *In the belly of the river: Tribal conflicts over development in the Narmada Valley*. Oxford University Press.