

EFFICIENT SHORTEST PATH APPROACH USING CLUSTER BASED WARSHALL'S ALGORITHM IN WIRELESS BODY SENSOR NETWORKS

K. Kalaiselvi¹, G. R. Suresh², V.Ravi³

¹Research Scholar and Assistant Professor (Senior Grade) Faculty of Computer Science and Engineering Saveetha Engineering College, Chennai 602105, Tamil Nadu, India

²Professor & Head Electronics and Communication Engineering Raja Lakshmi Institute of Technology Chennai 600124, Tamil Nadu, India

³Professor Faculty of Electrical and Electronics Engineering K.S.R College of Engineering, Tiruchengode, Namakkal 637215, Tamil Nadu, India

Abstract - Wireless body area Network(WBAN) is a special kind of sensor networks which is mainly designed for healthcare monitoring system. In this special kind of sensor nodes monitor the vital signs like blood pressure, temperature level, humidity etc. Energy efficiency is main issue in wireless body area Networks because the data is transferred from body head node to local server, the link failure is occur .In the data transfer phase if there is any link failure between nodes to local server the entire system is degraded in terms of packet delivery ration, latency and bandwidth of the network. The proposed system to find the shortest path between nodes to increase the network lifetime

Keywords: Cluster Head selection, classification rate, Throughput, Latency, Network life time

1. INTRODUCTION

Wireless body area network (WBAN) is a special network to operate automatically and autonomously connect various sensors and interact with various medical servers, the sensor nodes are implaned inside or outside the human body. Mainly user for healthcare monitoring system for elderly people .The elderly people cannot go the hospital often .Suppose the heart beat level increase the elderly people quickly the information is passed to care giver or doctors .The main purpose is take care by the individual Patient health without any loss.

1.1 APPLICATIONS

A) Health care and Glucose Level Monitoring System

Sensor nodes that can implanted inside or outside of the body. These nodes are continuously monitor the patient health .They prevent a large number of deaths caused by cancer, cardiovascular diseases. The affected people do treatment process in advance as they getting the vital sensed information regarding heart rate blood pressure of the health status of the patient. Sensor nodes are continuously monitor the glucose level of Diabetes patients could provide more consistent, accurate results to local server or physician the patients are automatically inject a insulin when a threshold glucose or blood

pressure level is reached

B) Asthma and Cancer

A wireless body sensor network help millions of patients are suffering from asthma, cancer .The sensor nodes continuously monitor and sense the abnormal allergic in the air and immediately report the status of patient information to the physician and or patient himself

C) Sports and Fitness and Military

Sensor nodes are continuously monitor the motion collect athletes to improve their performance details and to avoid injury earlier and also provide a match related schedule is provided Important for military application .Sensor nodes are providing the soldier information to better avoid threats

2. RELATED WORK

For more than fifty years, many clustering based algorithm is used to solve a shortest path algorithms which are frequently faced in real life applications. In Ivan Stojmenovi (2004), the authors proposed to find the shortest path between two nodes using Dijkstra's algorithm. T. He, C. Huang, B.M. Blum(2003),The authors proposed the DV (Distance Vector) Hop localization algorithm to find the minimum distance from cluster head node to local server form the entire cluster, In K.Kalaiselvi[2014] ,the author proposed the Distance based clustering algorithm for energy efficiency in Wireless sensor networks. These algorithm find out the shortest path between the cluster head node to base station. This algorithm efficiently find the shortest path between these two nodes and also increase the network life time of the network .In OnurYilmaz [2012] ,The author proposed the BFS algorithm for find the shortest path from top to bottom of the tree. In this algorithm automatically increases the network life time .In B.N.Clark [2012] .The author proposed the SHM algorithm to find out the minimum distance from cluster to base station. In this proposed approach they are using multi hop wireless' body area networks for difficult to find out the shortest path between two nodes. Zhenrong

Luo[2013] .the author proposed the LAC-T algorithm .This algorithm find out the threshold value between sink nodes to cluster head .If the threshold $t(n)$ value is less than the cluster head value of the cluster. In K.kalaiselvi[2014] proposed the data aggregation algorithms in wsn to increase the network life time of the network. Some literatures Yuxing Huang [8] suggested shortest path solutions to improve the final optimality of warshells solution

3. IMPEMENATATIONS

Wars hall’s algorithm is used to find out the shortest paths between nodes in the cluster, where every node has a weight in the cluster, which is represented as positive value. The main advantage of Wars hall’s algorithm is find the shortest distances between any node could be calculated in $o(n)$.Where N is the number of nodes in a cluster

The Algorithm Steps:

- STEP1: Set the initial value of shortest paths between any 2 nodes with Infinity.
- STEP2: Perceive all pair of nodes, and then find the shortest paths .It takes a node1 act as an intermediate node and so on.
- STEP3:Minimize the shortest paths between any two pairs of cluster head nodes
- For any two nodes of (m,n) , one should minimize the distances between the pairs of nodes

The equation should be $\min(\text{dist}[m][o] + \text{dist}[o][n], \text{dist}[m][n])$ (1) $\text{dist}[m][o]$ represents the shortest path between two nodes .They will use the first set of cluster nodes in the first cluster $\text{dist}[o][m]$.The $\text{dist}[m][n]$ represents the shortest path between the pair $[o,n]$.

4. RESULTS AND DISCUSSION

Figure1 shows the analysis of performance of the proposed shortest method with conventional shortest path algorithms .In this Proposed paper, 50 sensor nodes are assumed in an individual WBAN network. These sensor nodes are to form a cluster in the WBAN network. These conventional methods are affects the performance of the entire WBAN network in terms of PDR, Latency of the network. The warshall's algorithm achieved 97 % of classification rate, 98% PDR and 10.76 ms of latency.

In conventional methodologies Dijkstras algorithm achieved 95.29% of classification rate, 96.2% PDR and 18.61 ms of latency. (Distance Vector) Hop localization achieved 94.75% of classification rate, 95.5% PDR and 21.94 ms of latency. SHM algorithm achieved 95.45% of

classification rate, 96.7% PDR and 20.56 ms of latency. The overall performance of the wban network to improve the interms of latency, packet delivery raio, throughput, data rate to be improved. All the conventional methods to find the shortest path between from source to destination without considering the energy level of the wireless body area Network. The proposed methods also find the shortest path between the nodes with minimal time of the entire network. Using warshall's algorithm efficiently utilize the energy level of the wireless body area networks. It also increases the network life time.

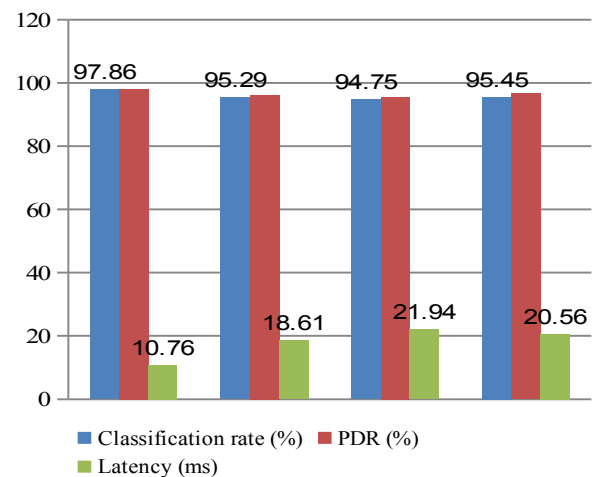


Figure 1 Analysis of performance of the proposed shortest method with conventional shortest path algorithms (50 Sensor Nodes)

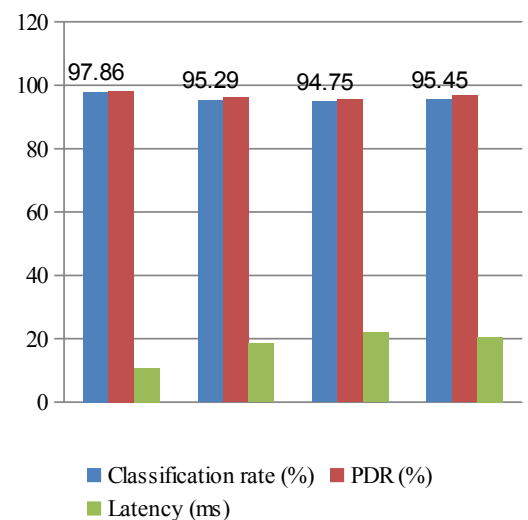


Figure 2 Analysis of performance of the proposed shortest method with conventional shortest path algorithms (100 Sensor Nodes)

Figure2 shows the analysis of performance of the proposed shortest method with conventional shortest path algorithms. In this proposed paper, 100 sensor nodes are assumed in an individual WBAN network

these nodes are affect the performance of the entire WBAN network in terms of Packet Delivery Rate (PDR), classification rate and latency. Warshall's algorithm achieved 98 % of classification rate, 97.4% PDR and 12.98 ms of latency. In conventional method Dijkstras algorithm achieved 95.2% of classification rate, 96.2% PDR and 19.75 ms, In (Distance Vector) Hop achieved 94.7% classification,95.5 PDR and 22.4% ms of latency. SHM algorithm achieved 95% of classification rate, 96% PDR and 21.56 ms of latency.

5. CONCLUSIONS

The performance of the individual latency classification rate and packet delivery ratio changes with different shortest path algorithm chosen. It introduce a Warshall's algorithm to select the minimum path between nodes. The proposed methods final solution improve the CH performance of the network life time in terms of latency, packet delivery ratio and classification rate

REFERENCES

- [1] Finding Minimum Transmission Radii For Preserving Connectivity And Constructing Minimal Spanning Trees In Ad Hoc And Sensor Networks Francisco Javier Ovalle-Martínez, Ivan Stojmenović, Fabián García-Nocetti, 10 September 2004
- [2] T. He, C. Huang, B.M. Blum, J.A. Stankovic And T. Abdelzaher, "range Free Localization Schemes For Large Scale Sensor Networks", Acm International Conference On Mobile Computing And Networking, Pp.81-95,2003.
- [3] Distance Based Clustering Algorithm For Energy Efficiency In Wireless Sensor Networks K Kalaiselvi, Gr Suresh applied Mechanics And Materials Vol. 626 (2014) Pp 20-25 Submitted: 25.06.2014 Online Available Since 2014/Aug/28 At www.scientific.net Accepted:03.07.2014©(2014)TransTechPublications,SwitzerlandDoi:10.4028/www.scientific.net/Amm.626.20
- [4] WirellessensorNetworksOnuryilmazasercandemirciayagizkaymakberkanergunaahmetyildirim cd Computers & Mathematics With Applications Volume 63, Issue 1, january 2012, Pages 48-59
- [5] B.N.clark,c.J.colbourn,D.S.johnsonunit Disk Graphs Discrete Math.,86(1990), Pp.165-177
- [6] The Research Of Routing Algorithm Based On Shortest Path Tree In Wsns Yuhua Liu, Zhenrong Luo, Ke Xu, Cui Xu Academy Of Computer Science, Central China Normal University, Wuhan 430079, China Email: Yhliu@Mail.Ccnu.Edu.Cn Proceedings Of The

2nd International Conference On Computer Science And Electronics Engineering (icsee 2013)

- [7] survey On Data Aggregation Based Algorithms For Energy Efficiency In Wireless Sensor Networks ,k Kalaiselvi, Gr Suresh International Journal of Applied Engineering Research, ISSN 0973-4562 Vol. 9 No. 21, 2014 © Research India Publications <http://www.ripublication.com/ijaer.htm>

- [8] Wsn Routing Algorithm Simulation Yuxing Huang And Qiang Ye University Of Prince Edward Island,Computer Science And Information Technology @ University Of Prince Edward Island

BIOGRAPHIES



K. Kalaiselvi received her Bachelor of Engineering degree in Computer science from Annamalai university Chidambaram in 2003, Master of Engineering degree in computer science from Annamalai university Chidambaram in 2005. She is currently working as an assistant professor in the Department of Computer science and Engineering at saveetha Engineering college, Chennai. Currently, she is pursuing PhD in information and communication engineering from Anna University, Chennai. She has published more than 10 research papers in journals and conferences .Her main research interests include Wireless body area networks, Wireless Sensor networks, IOT and Artificial Intelligence. She is a member of CSI and ISTE



Rd. R. Suresh received his Bachelor of Engineering degree in electronics and communication from Manonmaniam Sundaranar University in 1997, Master of Engineering degree in communication systems from Madurai Kamaraj University, Madurai in 2000 and PhD degree in the Faculty of Information and Communication Engineering from Anna University, Chennai in 2010. He is currently working as a Professor & Head, Department of ECE, Rajalakshmi Institute of Technology, Chennai. He has more than 18 years of experience in teaching at under graduate and graduate level.

He has published more than 60 research papers in journals and conferences. He has received the computer engineering division prize from the Institution of Engineers (India) for the year 2009. He is an active reviewer in the journals, IET image Processing and International journal of Electronics. His research area includes Medical Signal & Image processing, Speech processing and WSN in Telemedicine. He is a member of IEEE, IET and life member of ISTE.

Dr.V.RAVI received his Bachelor's Degree in Electrical and Electronics Engineering from K.S.Rangasamy College of Technology, Tiruchengode in 2002, Master's Degree in Power Systems from Annamalai University, Chidambaram in 2004, Doctor of Philosophy in



Electrical Engineering from Anna University, Chennai in 2013. He is presently working as a Professor in the Department of Electrical and Electronics Engineering at K.S.R. College of Engineering, Tiruchengode, Namakkal years of experience in teaching at under graduate and graduate level. His areas of interest are Power Systems, Soft Computing Techniques and Smart Machines.

He has guided fifteen under graduate and nine post graduate projects in different areas of Electrical and Electronics Engineering. He is a life member in Indian Society for Technical Education. He has presented seven international conferences and published thirteen papers in international journals.