

# STUDY OF PDN OVER CDN FOR IRRIGATION PURPOSE: CASE STUDY

Tirtha Jadhav<sup>1</sup>, Pooja Jadhav<sup>2</sup>, Dipak Tarate<sup>3</sup>, Tushar Patil<sup>4</sup>

<sup>1-4</sup>B.E. student, Dept. of Civil Engineering, G. H. Raisoni Institute of Engineering and Technology, Pune, India.

\*\*\*

**Abstract** - The objective of this paper is to highlighting the use of Pipe Distribution Network (PDN) instead of Canal Distribution Network (CDN) to increase the overall project efficiency of irrigation project and thereby reducing the stresses due to water scarcity. In order to achieve maximum benefits from PDN, planning, designing, and construction of it should be carefully done. This paper provides a guideline for planning, designing and construction of PDN system for irrigation. It is recommended that PDN system could be economical and feasible over conventional CDN and this system is so flexible that it can be implemented as a new. Classical approach for automatically solving the problems of network is by using specialized software such as EPANET.

**Key Words:** Pipe Distribution Network (PDN), Canal Distribution Network (CDN), Flow Velocity, Diameter of Pipe, Hydraulic Gradient Line (HGL).

## 1. INTRODUCTION

### 1.1 GENERAL

Water distribution system is hydraulic frameworks consisting of aspect such as are pipes, tanks reservoirs pumps and valves etc. It is necessary to supply water to the public; efficient water supply is of foremost importance in designing a new water distribution network or in spanning the existing one. It is also necessary to investigate and establish a good network ensuring sufficient head. Determination of flows and pressure head in network pipes has been of great amount and concern for those winding with designs, construction and conservation of public water distribution systems. Analysis and design of pipes networks create a relatively complex problem, especially if the network

The water is then fed into the distribution systems. The analysis is done using the software EPANET. EPANET is software that models water distribution piping systems. EPANET is public domain software that may be freely copied and distributed. It is a Windows 95/98/NT/XP program. EPANET performs extended period simulation of the water movement and quality behavior within pressurized pipe networks.

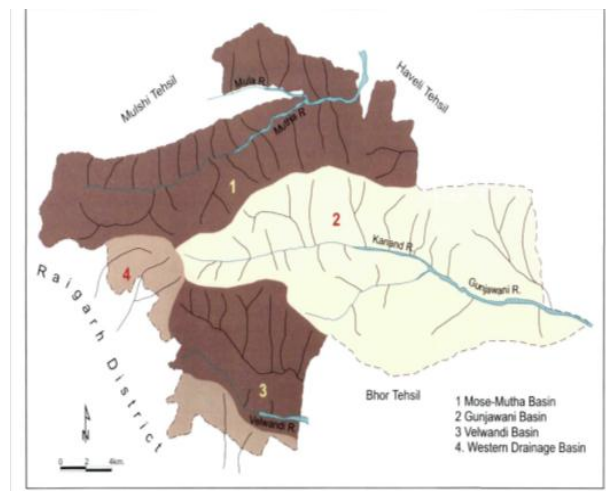
Pipe networks consist of pipes, nodes (junctions), pumps, valves, and storage tanks or reservoirs. EPANET tracks:

1. The flow of water in each pipe,
2. The pressure at each node,
3. The height of the water in each tank,

4. The type of chemical concentration throughout the
5. network during a simulation period,
6. Water age,
7. Source, and
8. Tracing.

### 1.2 OBJECTIVE

1. To analyze the existing water distribution system using EPANET and to suggest some measures if present network does not fulfill the present and future demand.
2. To supply water in sufficient quantity and at the desired pressure to an individual farm.
3. To design well planned pipe distribution network to carry the water from reservoir to farm.
4. To determine the pipe diameter and suitable material.



**Fig -1:** Physiography of Velhe Tehsil according drainage

Month of July, because of cloud cover. From July onwards daily range of temperature reaches maximum in December or January. As the Vehle Tehsil is situated in the rainshadow zone of the Western Ghat, it receives heavy rainfall from southwest monsoon during June to September. On an average Vehle receives more than 2600 mm. rainfall annually. July is the rainiest month (Fig.2.5). Greater contrast is observed in the distribution of rainfall over the whole tehsil. The western part of the Vehle Tehsil receives more than 1200 mm rainfall, and at the same time eastern part receives less than 600mm. of rainfall annually. The zone of heaviest rainfall coincides with the Western Ghat crest. Velhe is the rainiest place in the Pune district, occupying one of the

southernmost locations in the Pune district and directly exposed to the South-West monsoon. The amount of rainfall declines towards east Ambavane, being the eastern most place in the tehsil, receives less than 500mm rainfall annually.

## 1.2 STUDY AREA

The study area lies in Velhe taluka near Gunjawani dam in Pune district of Maharashtra. The dam is situated on the river Kanand. The area comes under canal command of Kurud irrigation tank. The field lies at 18.3014285°N latitude and 73.6194598° E longitude in Velhe taluka. The Length of the main canal is 1.730 km. The height of dam is 52.82m. Total catchment area of the dam is 104480 sq.km. The height of ogee spillway of Gunjavani dam is 22.76m and width of spillway is 27m. The design discharge of spillway is 1280.03 metre cube/sec. Total existing area under cultivation (irrigable area) is 16500 ha. Total capacity of dam is 25070 cumi.

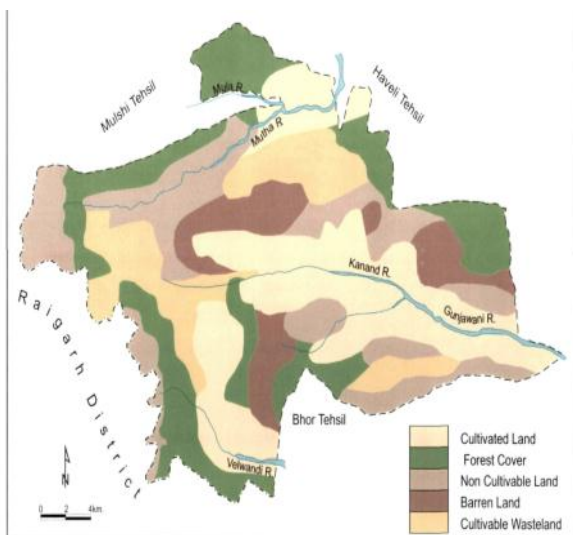


Fig -2: Landuse In Velhe Tehsil

## 2. METHODOLOGY AND MATERIALS

This chapter describes the materials and methodologies adopted in the study for analyzing the existing irrigation system and design of underground pipe line irrigation system to reduce the losses. The chapter also presents the comprehensive management plan of the existing crop and water resources in order to obtain the sustainable output from the agriculture. For this study actual site visit to be proposed and data collected is as follows:

1. Soil types :- The type of soil surrounding Gunjawani dam is brown-mixed fertile soil.
2. Local topography:- Pipe distribution along the gravitational flow is always cheaper and requires less power for supplying than the lift irrigation.

Selected site has suitable topography for gravitational flow

3. Local weather pattern:- Ample amount of rainfall is more than enough for adopting pipe distribution network. It will be absurd for designing the pipe distribution over an area having scanty rainfall.
4. Types of crop:- The common type of crop grown here is rice.

## 2.1 PLAN OF ACTION

1. Decide the size of area, should be more than 5 ha.
2. Prepare a contour map using Quantum Geological Information System software.
3. Reconnaissance survey will have to be carried out to collect the data regarding existing crop types, crop water requirement
4. Study the existing canal network.
5. Collect the soil specimen and test the various soil properties.
6. Calculate the theoretical discharge required for given area.
7. Then decide the discharge required for a particular reach (sub-area) considering the water requirement of crop of that reach.
8. Calculate the various losses in pipe distribution network
9. Determine the diameter of main pipe and distributary pipe for the effective head using EPANET software.

## 3. EXPERIMENTAL SECTIONS

1. Water Content by Oven Drying
2. Empty weight of container (W1) = 18 g
3. Weight of container plus soil (W2) = 78 g
4. Weight of container plus soil after oven drying (W3) = 65 g
5. Water content =  $(w2-w3) / (w3-w1)$   
 $= (78-65) / (65-18)$   
 $= 0.2765$
6. Specific Gravity by Pycnometer
7. Empty Pycnometer Weight (W1) = 654 g
8. Pycnometer + soil (W2) = 854 g
9. Pycnometer + soil + water (W3) = 1663 g
10. Pycnometer + water (W4) = 1536 g
11. Specific Gravity =  $(w2-w1) / (w2-w1)-(w3-w4)$   
 $= (854-654) / (854-654)-(1663-1536)$   
 $= 2.73$

## 4. SOFTWARE USE

EPANET is a computer program that performs extended period simulation of hydraulic and water quality behavior within pressurized pipe networks. A network consists of pipes, nodes (pipe junctions), pumps, valves and storage

tanks or reservoirs. EPANET tracks the flow of water in each pipe, the pressure at each node, the height of water in each tank, and the concentration of a chemical species throughout the network during a simulation period comprised of multiple time steps. In addition to chemical species, water age and source tracing can also be simulated.

EPANET was developed by the water supply and water resources division (formerly the drinking water research division) of the U.S Environmental protection agency's national risk management research laboratory. It is public domain software that may be freely copied and distributed.

EPANET is designed to be a research tool for improving our understanding of the movement and fate of drinking water constituents within distribution systems. It can be used for many different kinds of applications in distribution systems analysis. Sampling program design, hydraulic model calibration, chlorine residual analysis, and consumer exposure assessment are some examples. EPANET can help assess alternative management strategies for improving water quality throughout a system.

Running under windows, EPANET provides an integrated environment for editing network input data, running hydraulic and water quality simulations, and viewing the results in a variety of formats. These include color-coded network maps, data tables, and time series, Graphs, and contour plots.

## 5. CONCLUSION

Considering the scarcity of water, PDN system is recommended for irrigation in command area. PDN system saves water over conventional CDN system and should be preferred where land cost is comparatively high and farmers are unwilling to handover their valuable land. The pipeline distribution system would be more suitable for implementation of modern techniques like sprinkler and drip irrigation etc. The planning and designing of PDN should be carefully done so that maximum benefit of the system can be utilized.

## 6. ACKNOWLEDGMENT

The support provided by staff of G. H. Rasoni Institute of Engineering and Technology, Project guide prof. Pushpa Bhairi, The head of department and Principle in the form of research grant and Irrigation department of Gunjawani Dam for this study is very much appreciated.

## REFERENCES

[1] A.Kumar, J.Ashok Kumar G. Anisha, "Analysis and Dsign of Water Distribution Network Using EPANET for Chirala Municipality in Prakasam District of Andhra Pradesh," International Journal of Engineering And Applied Sciences (IJEAS), vol. 3, no. 4, pp. 53-60, April 2016.

- [2] Kalyani Garad Suteja Patode, "PDN:AN ALTERNATIVE TO FLOW IRIGATION ," VJER - Vishwakarma Journal of Engineering Research, vol. 2, no. 2, pp. 100-103, June 2018
- [3] Krunal Lakhani, Divy Patel, Govind Patel Darshan Mehata, "STUDY OF WATER DISTRIBUTION NETWORK USING EPANET," International Journal of Advanced Research In Engineering Science And Managment, vol. 3, no. 2, pp. 1-9, APRIL 2000.
- [4] S.T.Shetty, "Analysis and design pipeline system insted of canal system," International Journal of Advanced Research Ideas And Innovations In Technology, vol. 4, no. 2, pp. 1944-1948, August 2018.
- [5] Vivek Thakur Arjun Kumar, "DESIGN OF WATER DISTRIBUTION SYSTEM USING EPANET," International Journal of Advanced Research, vol. 4, no. 2, pp. 789-812, September 2015.

## BIOGRAPHIES



**Tirtha Jadhav**, B.E. student, Dept. of Civil Engineering, G. H. Rasoni institute of Engineering and technology, Pune, India.



**Pooja Jadhav**, B.E. student, Dept. of Civil Engineering, G. H. Rasoni institute of Engineering and technology, Pune, India.



**Dipak Tarate**, B.E. student, Dept. of Civil Engineering, G. H. Rasoni institute of Engineering and technology, Pune, India.



**Tushar Patil**, B.E. student, Dept. of Civil Engineering, G. H. Rasoni institute of Engineering and technology, Pune, India.